



CADdoctor SX Installation Guide

Elysium Co. Ltd.

April 2024

Table of Contents

1. About Installation	2
1.1. Caution	2
1.2. System Requirements	3
1.3. License Management program	4
2. Installation of CADdoctor	5
3. Startup and Registration of CADdoctor	9
4. Silent Installation and Silent Uninstallation	11
4.1. Silent Installation	11
4.2. Silent Uninstallation	11
4.3. Arguments	11

Notice

These documents are copyrighted and protected by Japanese law. No part of this document may be reproduced or transmitted in any form or by any means without prior consent of Elysium Co. Ltd. Any unauthorized copying of these documents will be a violation of the related software license and copyright laws.

The contents of this documentation include sensitive information. Registered users must protect confidential information against a leak of accident.

The contents of this documentation may include technical inaccuracies or typographical errors and it may be revised without prior notice.

In no event will Elysium Co. Ltd. be liable to anyone for any damages, including any lost profits, lost savings, lost data, incidental, special punitive or consequential damages or professional malpractice arising out of or in connection with this agreement or its breach even if Elysium Co. Ltd. has been advised of or should be aware of the possibility of such damages.

All rights reserved, © Elysium Co. Ltd.

Distributed by Elysium Co. Ltd.

Elysium Co. Ltd.

10th Floor, Press Tower, 11-1 Asahi-cho, Chuo-ku, Hamamatsu, Shizuoka

Postal Code: 430-0927, JAPAN

TEL +81 (0) 53 413 1000, FAX +81 (0) 53 413 1010

1. About Installation

1.1. Caution

You need Administrator privileges in order to install Elysium products.

You need permission for the following folders to use CADdoctor.

- Installation folder of CADdoctor (Permission:Read)
- %TMP%, %TEMP%, %USERPROFILE%, %LOCALAPPDATA%, %PUBLIC%\Documents (Permission:Modify)
- Work folder, Export folder (Permission:Modify)
- %ProgramData% (Permission:Read)

1.2. System Requirements

CPU	Microsoft Windows 10 Pro 64-bit or Microsoft Windows 11 Pro capable CPU
Memory	4GB or more
OS	Microsoft Windows 10 Pro 64-bit Microsoft Windows 11 Pro
Supported Language	Japanese, English, German, Simplified Chinese, Traditional Chinese, Korean
Display	Display capable of minimum 1280 x 1024 Video Card : OpenGL Board that supports double buffering.



Please be aware that CADdoctor does not work normally on some video cards.

Followings are confirmed video cards that CADdoctor works.

Tested OpenGL Video Cards

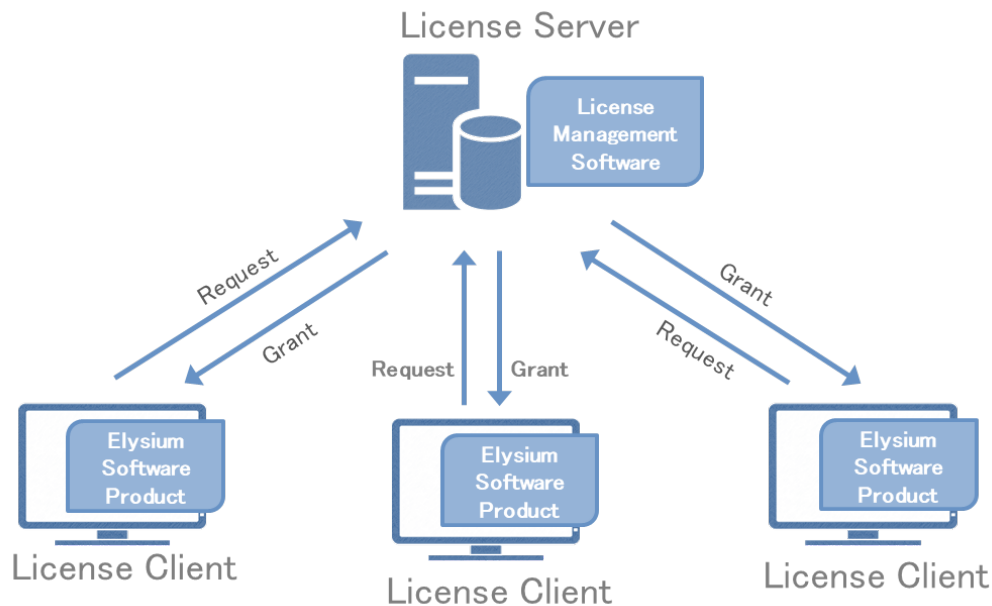
- NVIDIA Quadro K600
- NVIDIA Quadro K2000
- NVIDIA Quadro K4000
- NVIDIA Quadro P620
- NVIDIA Quadro P1000
- NVIDIA GeForce GTX 1050 Ti
- NVIDIA GeForce GTX 1070 Ti
- NVIDIA GeForce RTX 2070 SUPER



- Above list is for desktop computer. About the video card for laptop computer, please contact your support agent of the distributor.
- It needs 32-bit color, if you use "Pick Only Front Element." (It doesn't work properly, if your machine has only 16-bit color.)

1.3. License Management program

The license management program is a Server-Client security software.



Elysium license management program will be required. The license management program manages the User License Information (the number of users and the license expiration date etc.). You need to launch this license management program before using CADdoctor. CADdoctor connects with the license management program and checks whether the user has a valid license to use CADdoctor.

The machine on which the license management program is installed is called the license server. The machine on which the program that receives the issued license is called the license client.

CADdoctor specifies "Host Name" of the machine that is installed the license management program (license server) and "Port Number" for connection with the license management program. Set the license file issued by Elysium in your license management program to make CADdoctor available. You can see the details by a separate document "Sentinel RMS License Manager Setup & Quick Start Guide" included in "Sentinel_RMS_License_Manager_*.zip".

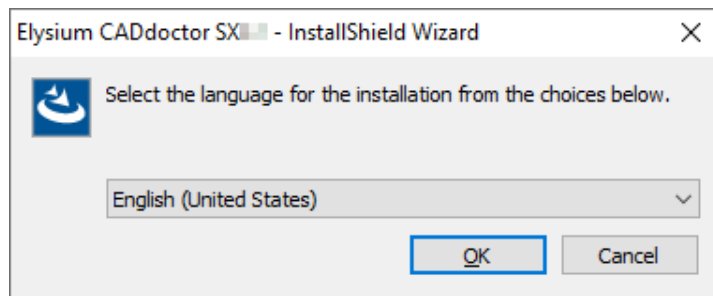
2. Installation of CADdoctor

1. Startup installation program

- Execute setup.exe in the caddoctor folder.

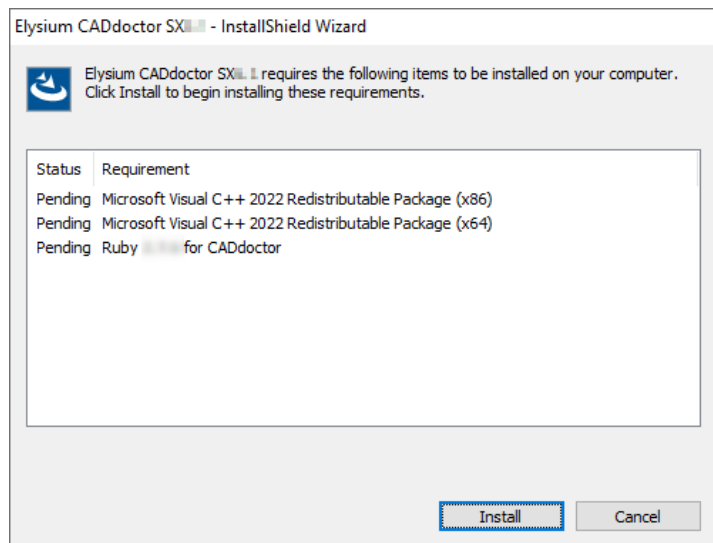
2. Select language

- Select English and push [OK].



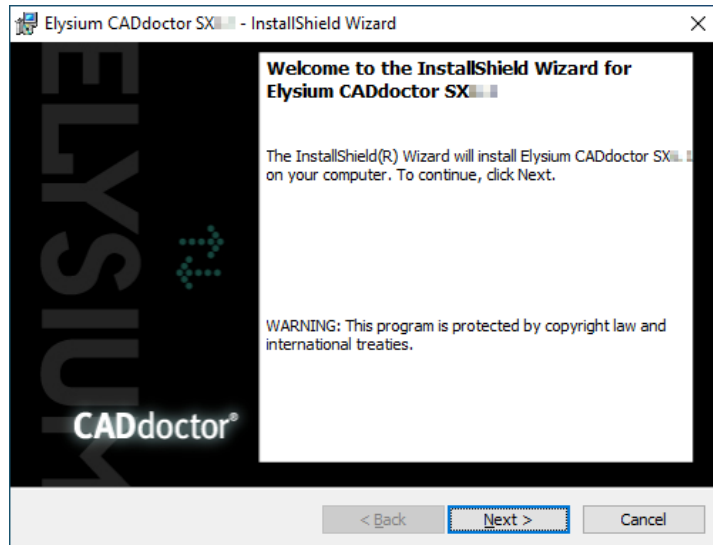
3. Install Prerequisites

- If above dialog is displayed, please install them.
- If they are already installed, this dialog will not appear.



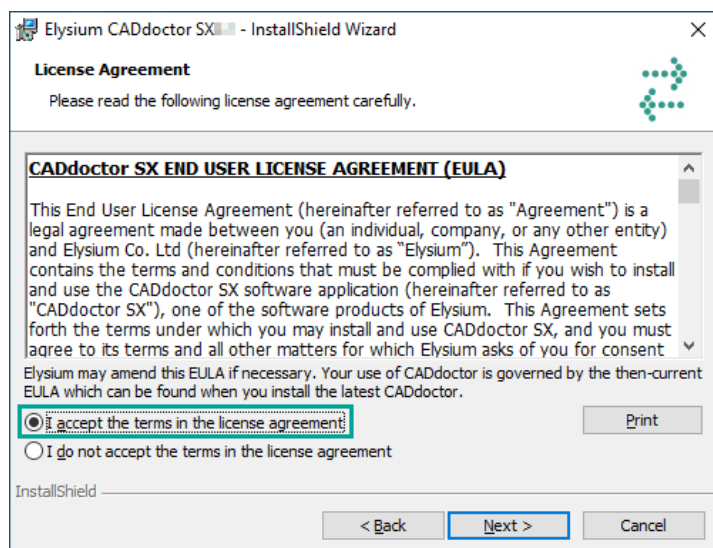
4. Setup CADdoctor

- Select [Next].



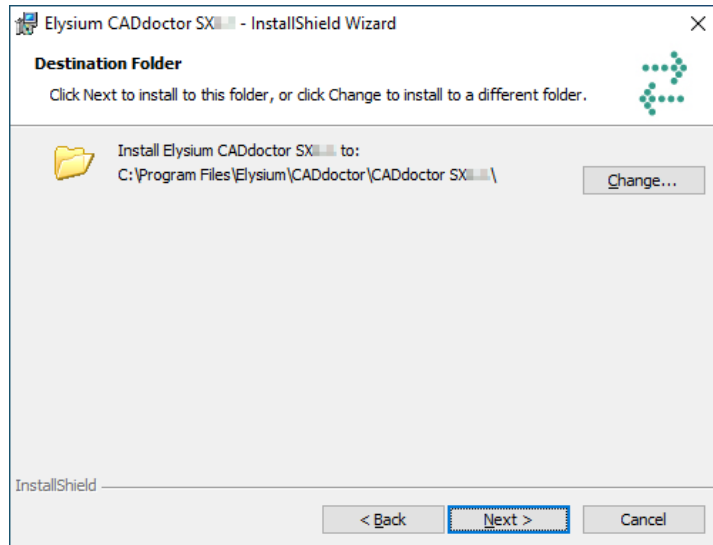
5. License Agreement

- Confirm the contents and go next.



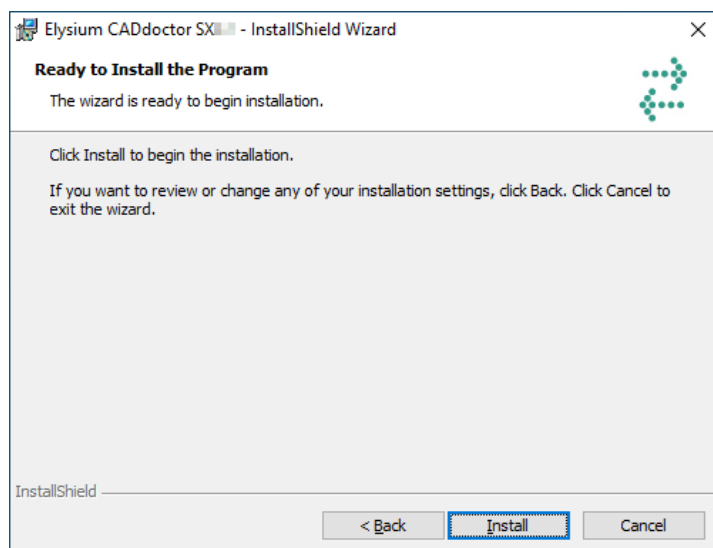
6. Specify a folder in which to install

- Specify a folder in which to install and go next.

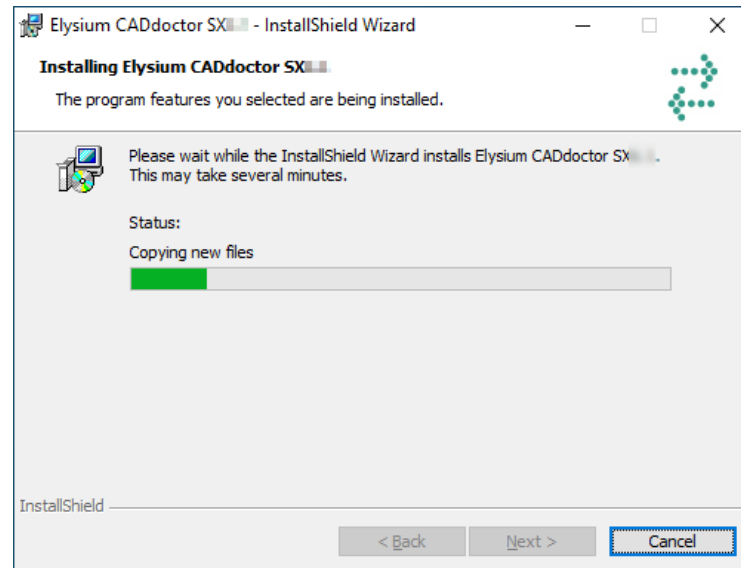


7. Confirm installation

- Select [Install].

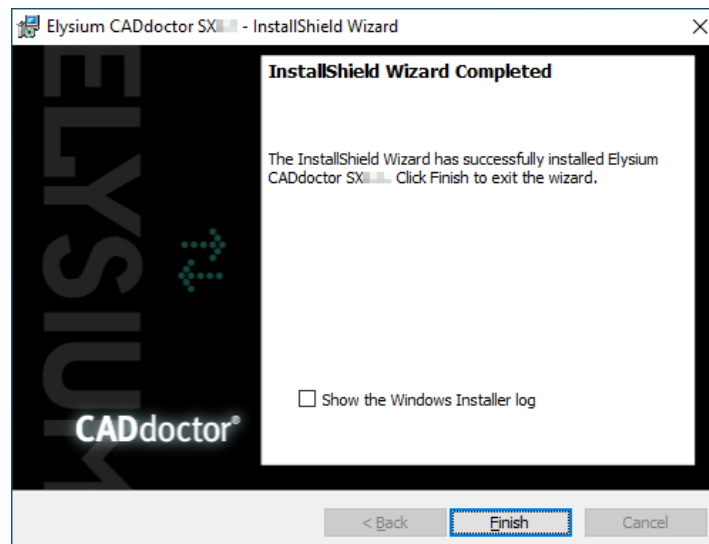


8. Execute installation



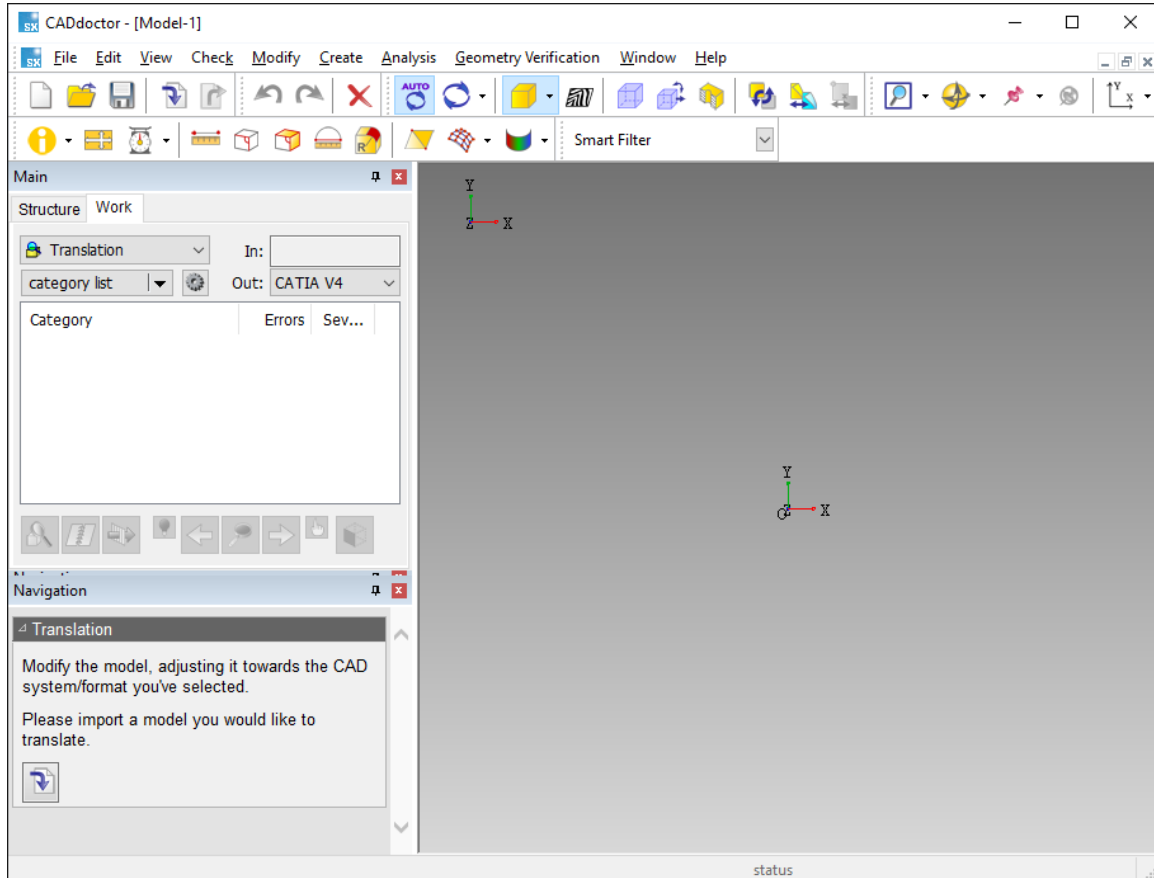
9. Complete installation

- Click [Finish] to exit the wizard once the installation is completed.

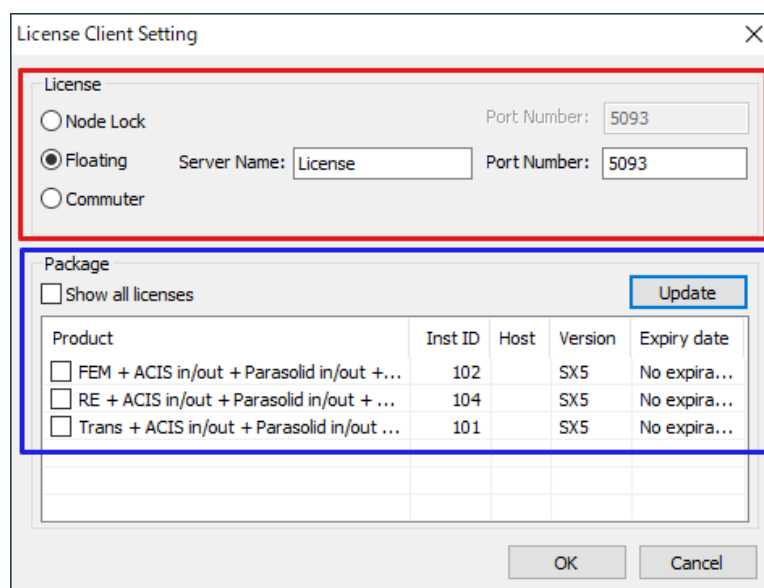


3. Startup and Registration of CADdoctor

Select [Elysium CADdoctor xx] - [CADdoctor xx] from start menu or double-click the shortcut icon on the desktop to launch CADdoctor. ('xx' is the version number)



Below dialog will appear at initial startup. Please set your license.



**[Node Lock License]**

Check "Node Lock" and enter the port number into "Port Number".

[Sever-Client License]

Check "Floating" and then enter the computer name that starts the license management program into "Server Name" and enter the port number into "Port Number".

[Using the function of bringing License]

Check "Commuter".

[Select Package]

When connecting to the server is successful, you can select the required license in package list.

4. Silent Installation and Silent Uninstallation

By using "silent installaion", you can set up CADdoctor for many computers easily without GUI operations.

4.1. Silent Installation

Newly install or upgrade CADdoctor by executing commands from the command prompt launched with administrator privileges. Please refer to the following example and command argument description for the commands to run.

Example of Command:

```
setup.exe /s /v"/l* "^"C:\temp\install.log"^" INSTALLDIR="^"C:\Program Files\Elysium\CADdoctor\CADdoctor SX10.0"^" /qn"
```

4.2. Silent Uninstallation

Uninstall CADdoctor by executing the command from the command prompt launched with administrative privileges. The installer for the currently installed version is required. Please refer to the following example and command argument description for the execution command.

Example of Command:

```
setup.exe /s /x /v"/l* "^"C:\temp\uninstall.log"^" /qn"
```

4.3. Arguments

The following is a list of command arguments to be passed to the installer (setup.exe) when running a silent installation.

```
/s : Silent mode  
/x : Uninstall CADdoctor  
/v"arg1 arg2 ..." : Specify following arguments for Msiexec  
/qn : Not to display dialogs in installation of CADdoctor  
/qn+: Display dialogs at the end of installation of CADdoctor  
/l* "^"C:\temp\install.log"^" : Specify the log file  
INSTALLDIR="^^"<Installation_Folder>"^^" : Specify the path to install(only  
required for installation)
```

All rights reserved by Elysium or the original author of this material. The content may not be edited, reproduced, distributed, transmitted, displayed, published, broadcast, sold or lent without the prior permission of the author.